

The ILP guide to the lighting industry

Copyright © 2017 ILP

All rights reserved. No part of this publication may be reproduced, stored in a retrieval system or transmitted in any form or by any means: electronic, electrostatic, magnetic tape, mechanical, photocopying, recording or otherwise, without permission in writing from the Institution of Lighting Professionals.

Institution of Lighting Professionals
Regent House
Regent Place
Rugby
Warwickshire
CV21 2PN

Tel: (01788) 576492

Email: info@theilp.org.uk

Website: www.theilp.org.uk

Registered Charity Number 268547

The ILP guide to the lighting industry

The UK lighting sector is blessed with a wide range of organisations, committees and working groups that consider, and lead on, industry issues, advocacy, standards, regulation and practice, not the least, of course, the ILP.

However, understanding exactly what this array of disparate bodies all do – where their priorities lie, what their structures are, where they diverge and where they overlap – can be challenging, even for seasoned lighting professionals. This is where our new, pocket ILP Guide to the Lighting Industry can help.

What this guide is designed to do is to outline, very simply, what the main industry organisations and committees are, what they do and where they sit within the wider context of the industry. Each description is designed to be a

concise summary, and therefore should not be seen as the definitive description of each body does or can offer.

What this guide does provide is a roadmap that will allow lighting professionals better to understand what organisations are out there and who can help them in their professional and day-to-day practice. Each description is accompanied by a web address to allow practitioners who want to find out more about a particular body to dig more deeply.

We hope you enjoy this guide and find it useful.

Peter Harrison
ILP Technical Services Manager

Haydn Yeo
ILP Vice President, Technical

The Association of Directors of Environment, Economy, Planning and Transportation (ADEPT)

The Association of Directors of Environment, Economy, Planning and Transport, better known just by its acronym ADEPT, represents place directors from county, unitary and metropolitan authorities, along with Local Enterprise Partnerships.

It is organised via four subject boards that cover: engineering; the environment; planning, housing and regeneration; and transport. Each board takes a lead on key strategic issues and policies and/or operational matters within its remit. Below these boards are a number of more specialised sub-national boards and working groups.

The County Surveyors' Society Wales, also known as CSS Wales, or the professional

association of all the directors/heads of service of technical services in Wales, has now been incorporated into ADEPT.

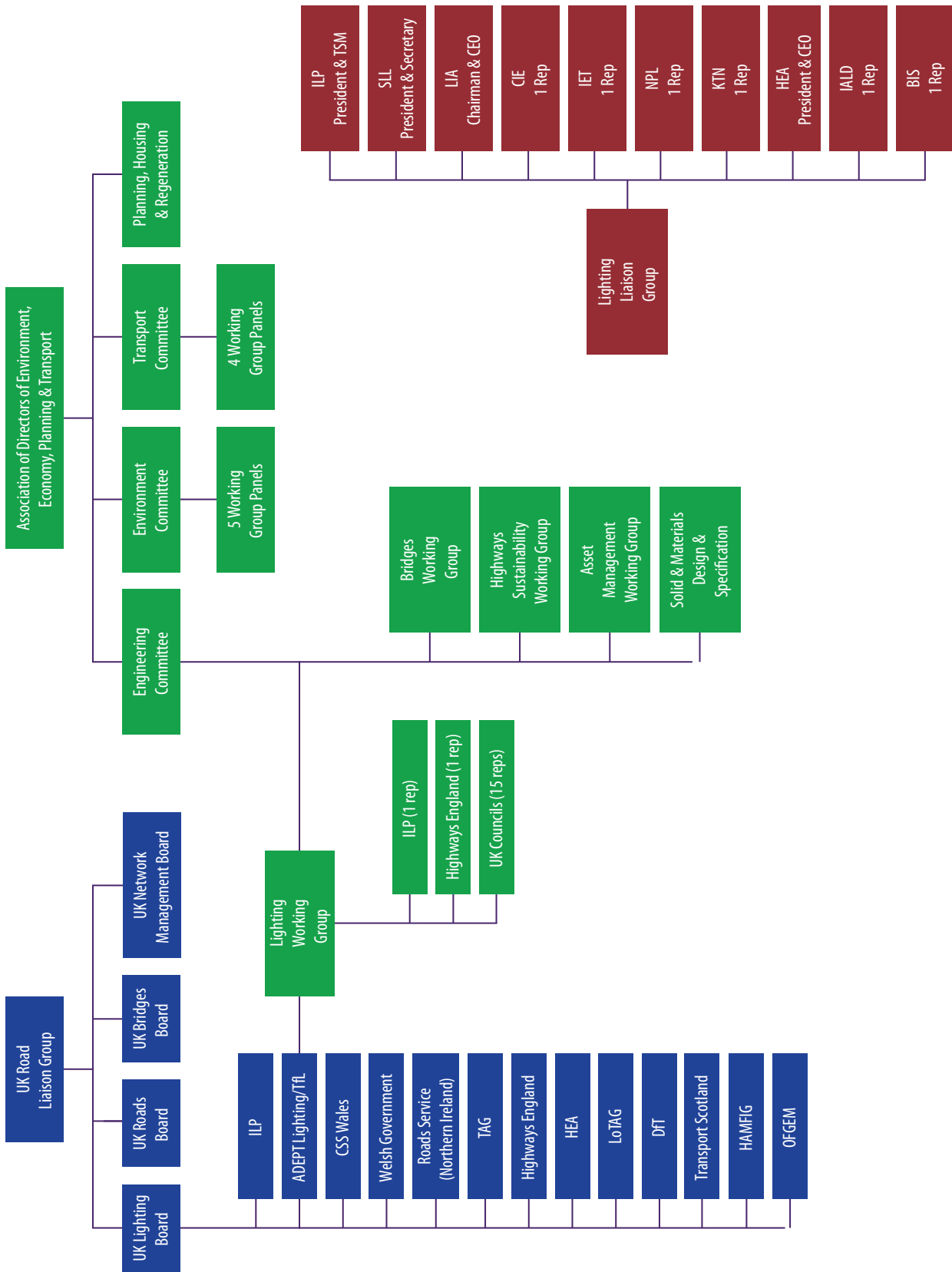
More information:

<http://www.adeptnet.org.uk/>

The Chartered Institution of Building Services Engineers (CIBSE)

The Chartered Institution of Building Services Engineers is the standard-setting body and 'voice' for building services engineering.

It publishes guidance and codes that are internationally recognised, and sets the criteria for best practice in the profession. It is frequently consulted by government on matters relating to construction, engineering and sustainability. It is represented on the major bodies and organisations which govern construction



Hierarchy of lighting industry committees

and engineering occupations in the UK, Europe and worldwide.

More information:

www.cibse.org

The Chartered Institution of Highways and Transportation (CIHT)

The Chartered Institution of Highways and Transportation has some 13,000 members and aims to promote the exchange of knowledge, improve policy formulation and stimulate debate on transportation issues. It also offers routes to qualifications such as Chartered and Incorporated Engineer status and also Transport Planning Professional.

More information:

<http://www.ciht.org.uk/>

The Commission Internationale de l'Eclairage (CIE)

The Commission Internationale de l'Eclairage, or International Commission on Illumination to give it its English-language title, was founded in 1931 and is the body responsible for the international co-ordination of lighting-related technical standards. It is recognised by the international standardisation body the ISO.

Its objectives are to:

- Provide an international forum for the discussion of all matters relating to the science, technology and art in light and lighting and for the interchange of information between countries
- Develop basic standards and procedures of metrology in light and lighting.
- Provide guidance in the application of principles and procedures in the development of international and national standards in light and lighting.
- Prepare and publish standards, reports and other publications concerned with all matters relating to science, technology and art in light and lighting.
- Maintain liaison and technical interaction with other international

organisations concerned with science, technology, standardisation and art in light and lighting.

As a side note, it is worth being aware that, since 1999, the optical, visual and metrological aspects of the communication, processing and reproduction of images have been covered by CIE. This includes all types of analogue and digital imaging devices, storage media and imaging media.

More information:

<http://www.cie.co.at/>

The Highway Electrical Association (HEA)

The Highway Electrical Association represents all organisations with an interest in the highway electrical industry. It provides services including:

- Representation for organisations involved in the highway electrical sector
- Technical advice, including access to technical and essential health and safety documents produced by its safety and training committees
- Registration to the Highway Electrical Registration Scheme (HERS), subject, of course, to meeting its requirements
- Access to nationally-accredited training

More information:

<http://www.thehea.org.uk/>

The Highways Asset Management Financial Information Group (HAMFIG)

The Highways Asset Management Financial Information Group has been set up to assist highways managers to implement fundamental changes to the CIPFA 'Code of Practice on Local Authority Accounting in the UK' in readiness for a change in measurement requirements for transport infrastructure assets from 2016/17.

This will require highways network assets, including roads, bridges, footpaths, cycleways, street furniture and street lighting to be valued in accordance with

the 'Code of Practice on Transport Infrastructure Assets'.

The purpose and aim of HAMFIG therefore is to assist in:

- The effective and efficient implementation of depreciated replacement cost accounting for highways
- Promoting the associated benefits of a robust asset management approach by local authorities.

Its membership comprises representatives from the Department for Transport, CIPFA, the Local Authority Scotland Accounts Advisory Committee, ADEPT (including CSS Wales), LGTAG, English local authorities, Transport Scotland, the UK Roads Board, the UK Bridges Board, and the Road Condition Management Group.

The International Association of Lighting Designers (IALD)

Founded in 1969 and headquartered in the US, the International Association of Lighting Designers nevertheless has a strong UK presence, and strong links to the ILP. It has some 1,200 members globally and is governed by an 11-strong board of directors.

The IALD is dedicated to promoting, articulating and defending the concerns of independent, professional lighting designers. It is also active in terms of setting and promulgating global standards for lighting design excellence, and promoting the advancement and recognition of professional lighting designers more generally.

More information:

<https://www.iald.org/>

The Institution of Engineering and Technology (IET)

The Institution of Engineering and Technology is the largest multi-disciplinary professional engineering institution in the world.

It was formed in 2006 from the merger of the two august lighting bodies: the Institution of Electrical Engineers (IEE) (which dated back to 1871) and the Institution of Incorporated Engineers, which was formed in 1884. Its worldwide membership is currently in excess of 167,000.

In terms of its role, the IET is probably best known for publishing the wiring regulations BS7671. However, beyond that, it represents the engineering profession in all matters of public concern and assists governments to make the public aware of engineering and technological issues. It provides advice on engineering matters, regularly advising parliament and other agencies.

More information:

<http://www.theiet.org/index.cfm?>

The Lighting Industry Association (LIA)

The Lighting Industry Association describes itself as Europe's largest trade association for industry, encompassing lighting equipment professionals, manufacturers, suppliers, retailers, wholesalers, designers and lighting professionals.

It promotes and delivers training, including the Lighting Certificate, and its technical managers sit on more than 40 national, European and international standards and regulatory committees. It has also recently opened a new Lighting Industry Academy.

As well as its training and standards work, it runs the largest independent lighting laboratory in Europe, and is able independently to measure and verify the safety and performance of lighting products. It also operates Lumicom, the not-for-profit WEEE compliance scheme and runs the only UK scheme that recycles light fittings.

More information:

www.thelia.org.uk

The Lighting Liaison Group (LLG)

The Lighting Liaison Group is an informal industry umbrella body designed to enable bodies with a shared interest in the application of light and lighting – for example, trade associations and professional bodies – to co-ordinate action, collaborate, share views and information.

The LLG's priority objectives include:

- Improve communication between lighting organisations
- Improve awareness of lighting and the benefits (including economic) of lighting with the public, local and central government
- Provide a joined-up consensus approach to UK lighting topics and ensure the industry presents coherent and co-ordinated strategies on areas of common interest
- Identify areas where a coherent and authoritative voice for the industry and profession can be presented on public policy issues and concerns
- To raise awareness of lighting issues within government, among the general public and elsewhere

Beyond this, it reviews and periodically re-issues the 'Lighting Sector Strategy'. This, again, is designed to ensure there is a consensus among UK lighting stakeholder bodies when it comes to informing and guiding the government and public.

The Local Government Technical Advisers Group (LGTAG)

The Local Government Technical Advisers Group is a professional association formed in 1995 by the Association of Metropolitan District Engineers, Association of London Borough Engineers and Surveyors and the Association of Chief Technical Officers.

It works with district councils in areas where local government responsibilities are divided between counties and districts. Its main aim is to represent members' interests by responding to European and UK government initiatives and consultations, promoting initiatives aimed

at influencing government policy and through the development of best practice.

LGTAG also provides co-ordinated and comprehensive advice and support to technical professionals employed by local authorities (whether directly or indirectly) to manage and advise on their services.

Its structure is that it works through a of regions, technical committees, topic groups and individual contacts.

More information:

<http://www.lgtag.com>

The London Technical Advisors Group (LoTAG)

The London Technical Advisors Group is similar to LGTAG but, as its name suggests, is for London local authorities as well Transport for London.

It works as a hub for professional advice and assistance for local policy development and service delivery on a London-wide basis.

Within LoTAG there is also the London Technical Advisors Group Asset Management Board (LoTAMB), which develops and disseminate good asset management practice across London for carriageways, footways, public highways, bridges and structures and other highway assets (<http://lotamb.co.uk/>).

More information:

<http://www.lgtag.com/lotagarchive/>

The Society of Light and Lighting (SLL)

The Society of Light and Lighting is part of CIBSE (see entry above) but is an important body within the lighting community, as it represents the interests of all those interested in the application of light.

To that end, lighting designers, consulting engineers, researchers, students, professors, manufacturers and sales staff, among others, all contribute to and are members of the SLL.

Its current incarnation was launched back in 1999, but the society itself goes back more than 100 years, to 1909, when the Illuminating Engineering Society was first established.

The society's aims are to:

- Promote the benefits of good lighting, especially in the built environment.
- Be at the forefront of developing lighting as an integral part of a low-energy and sustainable future
- Provide professional recognition to those in light and lighting
- Establish and promote good practice in lighting design and engineering in all their facets
- Provide a forum where people interested in all aspects of light and lighting can come together
- Set and maintain standards in education for light and lighting
- Advise government and other bodies on the best use and application of light and lighting

More information:

<http://www.cibse.org/society-of-light-and-lighting>

The UK Roads Liaison Group (UKRLG),

The UK Roads Liaison Group (UKRLG) brings together national and local government from across the UK to consider roads infrastructure engineering and operations matters. It is a specialist membership group that sits within the Chartered Institution of Highways & Transportation (see entry above).

It is responsible for publishing codes of practice, general guidance, asset management guidance, policies and research reports on maintaining highways assets, with its work being predominantly carried out by four boards, encompassing: roads, bridges, lighting, and network management.

More information:

<http://www.ukroadsliaisongroup.org/>

Useful government bodies

The Department for Business, Energy and Industrial Strategy (BEIS)

This will be better known to lighting professionals as the Department for Business, Innovation & Skills (BIS). BIS was merged with the Department of Energy and Climate Change under the new government of Theresa May in the summer of 2016 to form this new combined department.

Nevertheless, it is the key government department for economic growth, even though apprenticeships and skills development has now also been hived off to the Department for Education (DfE).

Its numerous responsibilities include supporting innovation and developing the UK's science and research industry, making sure consumer law is fair for both consumers and businesses, and business regulation.

More information:

<https://www.gov.uk/government/organisations/department-for-business-energy-and-industrial-strategy>

The Department for Transport (DfT)

The Department for Transport is the government department responsible for England's transport network and transport matters in Scotland, Wales and Northern Ireland that have not been devolved.

The department oversees a number of transport services, including the Driver and Vehicle Licensing Agency, Driver and Vehicle Standards Agency, Maritime and Coastguard Agency, and the Vehicle Certification Agency.

More information:

<https://www.gov.uk/government/organisations/department-for-transport>

Highways England (HE)

Highways England (formerly the Highways Agency) is a government-owned company with responsibility for managing the core road network in England.

It operates information services, liaises with other government agencies and provides staff to deal with incidents on the roads it manages. Founded in 1994, it was converted into a government-owned company in April 2015.

Its operations are split into six regions roughly based on the regions of England. These, in turn, are sub-divided into 14 operational areas (and see Appendix 1 for a table showing how this works). These operational areas are each managed and maintained by an area team and a contractor, known as the Managing Agent and the Managing Agent Contractor.

More information:

<https://www.gov.uk/government/organisations/highways-england>

Roads Service Northern Ireland (RSNI)

Roads Service Northern Ireland is a part of The Department for Infrastructure and is a devolved Northern Ireland government department in the Northern Ireland Executive. The minister with overall responsibility for it is the minister for infrastructure.

The service's main responsibilities include: regional strategic planning and development; transport strategy and sustainable transport; public roads; public transport; air and sea ports; and water and sewerage services.

More pertinently for lighting professionals, RSNI has responsibility for all roads in Northern Ireland, including highway lighting.

More information:

<https://www.infrastructure-ni.gov.uk/>

Transport Scotland

Since September 2010, Transport Scotland has been merged with the Transport Directorate of the Scottish Government. However, the two combined bodies continue to be called Transport Scotland, and have responsibility for all transport-related issues across Scotland.

The agency currently has six directorates: aviation, maritime, freight and canals; finance, corporate and analytical services; major transport infrastructure projects; transport policy; rail; and trunk road and bus operations.

Transport Scotland works in partnership with private sector transport operators, local authorities and government. It also works closely with the four voluntary Regional Transport Partnerships (RTPs). It is also responsible for managing Traffic Scotland.

More information:

www.transport.gov.scot/

Other useful bodies, but non-specific to lighting

The Chartered Institute of Public Finance and Accountancy (CIPFA)

While, self-evidently, not a lighting industry body, the Chartered Institute of Public Finance and Accountancy is an important organisation in the context of light and lighting.

It is the professional body for people in public finance and has around 14,000 members, who work within public services, national audit agencies, major accountancy firms and other bodies where public money needs to be effectively and efficiently managed.

To that end, CIPFA also champions best practice within public services. This includes information and guidance, courses and conferences, property and asset management solutions, consultancy and interim people for a range of public sector clients.

More information:

<http://www.cipfa.org/>

The Knowledge Transfer Network (KTN)

The Knowledge Transfer Network bills itself as the UK's 'innovation network'. Its primary role is to nurture, develop and scale-up innovation within business, including within lighting.

Established by the government's Innovate UK agency (<https://www.gov.uk/government/organisations/innovate-uk>), it has teams covering all significant sectors of the economy, from defence and aerospace to the creative industries, the built environment to biotechnology and robotics.

More information:

www.ktn-uk.co.uk

The Office of Gas and Electricity Markets (OFGEM)

Again, an organisation with a much wider remit than lighting, the Office of Gas and Electricity Markets, or Ofgem as it is more commonly known, is the independent

national regulatory authority for the gas and electricity market.

Its principal objective is to protect the interests of existing and future electricity and gas consumers by:

- promoting value for money
- promoting security of supply and sustainability, for present and future generations of consumers, domestic and industrial users
- the supervision and development of markets and competition
- regulation and the delivery of government schemes.

More information:

<http://ofgem.gov.uk/>

The National Physical Laboratory (NPL)

The National Physical Laboratory is the UK's centre of excellence for developing and applying the most accurate measurement standards, science and technology.

More information:

<http://www.npl.co.uk/>

And finally...

The Institution of Lighting Professionals (ILP)

It stands to reason that, if you are reading this guide, you will be aware of the Institution of Lighting Professionals. Nevertheless, it is worth reiterating our role within, and importance to, the industry.

The key purpose of the ILP is to promote excellence in all forms of lighting. This includes interior, exterior, sports, road, flood, emergency, tunnel, security and festive lighting as well as design and consultancy services. With some 2,000 members, we are a registered charity, a limited company and a licensed body of the Engineering Council.

The ILP's history goes back to 1924 and the foundation of the Association of Public Lighting Engineers. This evolved into the

Institution of Lighting Engineers and, now, the ILP.

The ILP's role and work is very much as an independent, authoritative voice for the industry, focused around advocacy, standards, best practice and education, both professional and continuing education.

The Institution also lobbies central and local government and seeks to raise public awareness about the crucial role of lighting in everyday life. It is also active in outreach work with schools and young people to promote the benefits of a career in the industry.

More information:

www.theilp.org.uk

Appendix 1: Highways England operational arrangements

HE Region	Operational Area	Counties covered (whole and partial)	Roads managed
South West	Area 1	Cornwall, Devon	A30, A35, A38
	Area 2	Bristol, Devon, Dorset, Gloucestershire, Somerset, Wiltshire	M4, M5, A36, A40, A303, A4
London & South East	Area 3	Berkshire, Buckinghamshire, Dorset, Hampshire, Surrey, Oxfordshire	M27, M271, M275, M3, M4, M40, A3, A3(M), A27, A31, A34, A303, A404, A404(M), A308(M)
	Area 4	Kent, Surrey, East Sussex, West Sussex	M2, M20, M23, A2, A20, A21, A23, A26, A27, A259, A2070
	Area 5 (DBFO)	M25 Area: Berkshire, Buckinghamshire, Essex, Hertfordshire, Kent, Surrey	M25, M1, M4, M10, M11, M20, M26, A1, A3, A13, A30, A282, A1089
East	Area 6	Cambridgeshire, Essex, Norfolk, Suffolk	M11, A11, A12, A14, A47, A120
	Area 8	Bedfordshire, Buckinghamshire, Cambridgeshire, Hertfordshire, Essex,	M1, M11, M40, M45, A1, A5, A11, A14, A43, A45, A421, A428
Midlands	Area 7	Derbyshire, Leicestershire, Rutland, Lincolnshire, Nottinghamshire, Northamptonshire	M1, M6, M45, A1, A5, A14, A38, A42, A43, A45, A46, A50, A52, A421
	Area 9	Gloucestershire, Shropshire, Staffordshire, Warwickshire, West Midlands, Worcester, Herefordshire	M5, M6, M40, M42, M50, M54, A5, A40, A46, A49, A435, A449, A456, A458, A465, A6, A483
North West	Area 10	Cheshire, Merseyside, Greater Manchester, Lancashire	M6, M53, M56, M57, M58, M60, M61, M62, M66, M67, M602, A41, A55, A56, A483, A550, A556, A570, A663, A5036
	Area 13	Cumbria, Lancashire	M6, M55, A65, A66, A69, A74(M), A585, A590, A595
North East	Area 12	Yorkshire, Lincolnshire, Derbyshire, Greater Manchester	M1, M18, M62, M180, M181, M606, M621, A1, A19, A57, A61, A63, A64, A160, A168, A180, A616, A628, A1033
	Area 14	Durham, Northumberland, North Yorkshire, Tyne and Wear	A1, A19, A66, A69, A168, A174, A696, A1033